

## Monthly Weather Summary in Thailand

### February 2021

In February 2021, the high pressure area from China periodically extended its ridge to cover upper Thailand throughout the month in addition with the prevailing of the northeast monsoon over the Gulf of Thailand and southern Thailand during the beginning and the middle of the month and the westerly wind in the upper-level moved to cover the northern and northeastern parts during the end of the month. These caused cool weather over upper Thailand with cold weather in several areas of northern and northeastern parts, especially in the mountainous areas and mountain tops that experienced cold to very cold weather. However, the heat low pressure cell covered upper Thailand during late month, temperature was relatively increased and hot weather occurred in most areas of Thailand that considered as the beginning of summer on February 27. For rainfall, there was rainfall over upper Thailand during February 7-9 that effected by the westerly trough moving to cover the northern and upper northeastern parts during this time that causing of the average total rainfall was above normal. Monthly rainfall was above normal in almost parts of the country i.e. northern part 8.81 mm (85%), northeastern part 4.6 mm (25%), central part 7.2 mm (59%) and eastern part 11.6 mm (40%) apart from southern part (east coast) 22.1 mm (64%) and southern part (west coast) 21.4 mm (78%). The details are as follows:

**1-10 February:** The high pressure areas covered upper Thailand throughout the period and another moderate high pressure areas from China extended its ridge to cover the northeastern, central and eastern parts during the middle of the period and later weakened. These conditions caused cool weather almost the whole areas with cold weather in several areas of upper northern and upper northeastern parts. The lowest temperature was 10.8 °C at Agrometeorological Station in Nan province on February 10 and dropped to 2.0 °C at Kew Mae Pan, Doi Inthanon in Chiang Mai province on February 10. For rainfall, under the influence of the westerly trough moved through Myanmar to cover the northern part and upper northeastern parts during February 7-9 accompanied with the southerly and southeasterly wind prevailed over the lower northeastern, central and eastern parts during February 8-9, scattered to fairly widespread rain was found in upper Thailand with heavy to very heavy rainfall during this period. The maximum daily rainfall in upper Thailand was 126.0 millimeter at Amphoe Klaeng in Rayong province on February 8. Hail was reported at Chiang Mai and Chiang Rai provinces on February 8. In southern Thailand, isolated to scattered rain with heavy rainfall along east coast was effected by the prevailing of the northeast monsoon over the Gulf of Thailand and southern part throughout the period. The highest daily rainfall was 40.0 millimeter at Amphoe Wiang Sa in Surat Thani province on February 9.

**11-20 February :** The moderate high pressure areas covered upper Thailand during the beginning of the period and later weakened. Another moderate high pressure areas from China extended its ridge to cover the mentioned areas during the end of the period. In addition, the southerly and southeasterly wind prevailed over the lower northern, lower northeastern, central and eastern parts during middle of the period. These caused generally cool weather in upper Thailand with cold weather in several areas of northern and northeastern parts excerpt for during of the middle of the period that temperature increased but the weather remained generally cool weather in northern and northeastern part whereas cool weather in several areas was found in central and eastern parts. The lowest temperature was 10.3 °C at Agrometeorological station in Chiang Rai province on February 11 and dropped to 1.0 °C at Kew Mae Pan, Doi Inthanon in Chiang Mai province on February 16. There was unseasonable rainfall in some areas of upper Thailand for few days with the maximum daily rainfall of 79.8 millimeter at Pattaya, Amphoe Bang Lamung in Chon Buri province on February 17. In

southern part, the northeastern monsoon prevailed over the Gulf of Thailand and the southern part throughout the period causing isolated rain along east coast during the beginning and the end of the period. The highest daily rainfall was 70.3 millimeter at Trang Rubber Experimental Station in Trang province on February 12.

**21–28 February :** The weak high pressure area covered upper Thailand during the beginning of the period accompanied with the upper westerly wind moved from Myanmar to prevailing over the northern and upper northeastern parts. These cause of cool weather remained in upper Thailand in the morning with cold weather in several areas of the northern and northeastern parts. Meanwhile, daytime temperature rose during the middle and the end of the period, heat low pressure cell covering over upper Thailand caused the hot weather almost the whole areas and very hot weather in some areas during this time. The lowest temperature was 12.8 °C at Agrometeorological station in Chiang Rai province on February 27 and dropped to 5.0 °C at Kew Mae Pan, Doi Inthanon in Chiang Mai province on February 26. For rainfall, isolated light to moderate rain was found in upper Thailand for few days with the highest daily rainfall of 23.0 millimeter at Kiu Thapyang Teak Forest, Amphoe Mae Jan in Chiang Rai province on February 21. In southern part, there was no rainfall except for isolated rain along east coast during the end of the period due to the prevailing of the weak easterly wind over the Gulf of Thailand and southern part almost the period. The highest daily rainfall was 13.8 millimeter at Amphoe Bang Khan in Nakhon Si Thammarat province on February 28.

---

**Note:** 1. Rainfall, temperatures and natural disasters in this report were updated up to March 4, 2021.

Climate Center  
Meteorological Development Division  
Meteorological Department

Monthly Current Report  
Rainfall and Accumulative Rainfall  
February 2021

Northern Thailand

Station	Temperature ( °c)		Rainfall (mm)		Accumulative rainfall (mm) Since 1 January	
	Mean	Above or below normal	Actual	Above or below normal	Actual	Above or below normal
Chiang Rai	22.4	0.8	68.0	54.2	87.4	66.1
Mae Hong Son	23.2	0.6	19.7	13.7	20.4	8.0
Phayao	23.9	1.1	73.2	64.0	75.8	60.9
Chiang Mai	25.4	1.5	3.3	-5.6	27.7	14.6
Tha Wang Pha	23.5	1.0	28.8	19.8	31.6	15.6
Nan	24.3	0.7	27.8	15.9	28.0	11.7
Lamphun	25.0	0.7	41.4	36.5	43.6	35.9
Lampang	25.7	1.0	19.5	10.7	20.1	8.5
Mae Sariang	24.4	2.2	0.0	-6.5	1.8	-6.2
Phrae	24.8	0.2	6.6	-2.2	6.6	-8.0
Uttaradit	26.1	0.0	10.7	-3.8	10.7	-9.3
Bhumibol Dam	26.5	-0.2	5.1	-1.8	5.1	-4.4
Tak	27.1	-0.2	0.6	-8.1	6.6	-4.2
Mae Sot	25.8	1.3	4.4	-3.8	4.4	-5.5
Umphang	22.9	1.3	5.2	-3.9	5.2	-10.7
Phitsanulok	26.1	-0.9	29.0	15.5	29.0	11.6
Lom Sak	26.2	0.3	9.1	-8.0	9.1	-12.8
Phetchabun	26.5	0.0	23.4	7.3	23.4	1.7
Wichian Buri	27.0	-0.5	6.1	-6.5	6.1	-14.2
Kamphaeng Phet	27.0	0.2	2.5	-10.6	2.7	-12.7
Over the area	25.2	0.6	19.2	8.8 85%	22.3	7.3 49%

Northeastern Thailand

Station	Temperature ( °c)		Rainfall (mm)		Accumulative rainfall (mm) Since 1 January	
	Mean	Above or below normal	Actual	Above or below normal	Actual	Above or below normal
Nong Khai	25.3	0.4	26.8	9.5	26.8	1.2
Loei	24.1	-0.1	27.6	11.5	27.6	5.3
Udon Thani	24.8	-0.5	40.4	18.4	40.4	12.1
Nakhon Phanom	24.5	0.1	30.9	-0.1	30.9	-3.1
Sakon Nakhon	24.2	-0.2	21.6	-7.7	21.6	-12.4
Mukdahan	24.8	-0.1	7.2	-10.2	7.2	-13.9
Khon Kaen	25.3	-0.6	21.4	0.0	21.4	-4.0
Kosum Phisai	25.3	-0.5	13.1	-1.9	13.1	-5.4
Roi Et	25.5	-0.2	26.9	7.7	26.9	4.1
Chaiyaphum	26.4	-0.3	13.1	-1.2	13.1	-5.7
Ubon Ratchathani	25.9	-0.6	7.3	-8.1	7.3	-10.1
Tha Tum	25.3	-0.9	30.6	14.5	30.6	9.4
Surin	25.8	-0.8	46.7	35.2	46.7	29.6
Nakhon Ratchasima	26.1	-0.8	13.2	-2.9	13.2	-11.1
Chok Chai	25.9	-0.6	19.3	4.5	19.3	0.5
Nang Rong	24.9	-1.5	22.8	3.2	22.8	-1.5
Over the area	25.3	-0.4	23.1	4.6 25%	23.1	-0.2 -1%

- NOTES :
- 1) Mean temperature is the average of daily dry-bulb temperature
  - 2) "T" is trace, rainfall amount less than 0.1 mm.
  - 3) "blank" is incomplete data.
  - 4) Temperature and rainfall are preliminary data.

Monthly Current Report  
Rainfall and Accumulative Rainfall  
February 2021

Central Thailand

Station	Temperature ( °c)		Rainfall (mm)		Accumulative rainfall (mm) Since 1 January	
	Mean	Above or below normal	Actual	Above or below normal	Actual	Above or below normal
Nakhon Sawan	28.0	-0.1	8.4	-3.5	8.4	-7.8
Bua Chum	26.6	-0.8	27.2	18.1	27.2	11.4
Lop Buri	28.2	0.1	0.2	-6.7	0.2	-12.4
Suphan Buri	27.7	0.3	33.1	26.2	33.1	22.5
Thong Pha Phum	26.7	-0.1	0.6	-15.8	0.6	-21.2
Kanchanaburi	28.2	0.2	6.1	-12.1	6.1	-15.4
Bangkok Airport	28.2	-0.1	0.0	-9.0	0.0	-20.4
Bangkok Metropolis	28.4	0.1	80.7	60.7	80.7	47.4
Over the area	27.8	0.0	19.5	7.2 59%	19.5	0.5 3%

Eastern Thailand

Station	Temperature ( °c)		Rainfall (mm)		Accumulative rainfall (mm) Since 1 January	
	Mean	Above or below normal	Actual	Above or below normal	Actual	Above or below normal
Prachin Buri	28.1	-0.1	8.1	-7.7	8.1	-15.4
Kabin Buri	26.5	-1.3	40.2	15.3	40.2	6.3
Aranyaprathet	27.9	-0.3	0.0	-27.6	0.0	-33.0
Chon Buri	28.3	0.3	3.6	-10.7	3.6	-20.6
Ko Sichang	27.3	-0.3	9.0	-6.7	9.0	-17.6
Pattaya	27.1	-0.2	80.0	65.7	80.0	50.1
Sattahip	26.5	-1.0	74.2	54.8	74.2	29.2
Rayong	27.0	-0.9	48.4	11.9	48.4	-8.8
Chanthaburi	27.3	0.0	114.3	77.9	114.3	59.2
Khlong Yai	27.2	0.0	29.2	-56.8	35.0	-88.2
Over the area	27.3	-0.4	40.7	11.6 40%	41.3	-3.9 -9%

- NOTES :
- 1) Mean temperature is the average of daily dry-bulb temperature
  - 2) "T" is trace, rainfall amount less than 0.1 mm.
  - 3) "blank" is incomplete data.
  - 4) Temperature and rainfall are preliminary data.

Monthly Current Report  
Rainfall and Accumulative Rainfall  
February 2021

Southern Thailand, east coast

Station	Temperature ( °c)		Rainfall (mm)		Accumulative rainfall (mm) Since 1 January	
	Mean	Above or below normal	Actual	Above or below normal	Actual	Above or below normal
Phetchaburi	27.0	-0.2	19.0	15.1	19.0	3.7
Hua Hin	27.1	-0.1	42.8	27.5	42.8	15.7
Prachuap Khiri Khan	26.6	0.0	50.4	28.6	64.6	18.4
Chumphon	27.0	0.3	1.7	-43.0	31.3	-72.8
Surat Thani	26.6	0.2	0.3	-12.0	20.6	-28.5
Ko Samui	27.3	-0.1	5.0	-49.4	55.6	-85.0
Nakhon Si Thammarat	26.6	0.1	6.8	-61.4	125.3	-88.3
Songkhla	27.3	-0.2	0.2	-48.4	114.1	-9.3
Hat Yai Airport	26.8	0.1	0.0	-24.4	158.0	79.8
Pattani Airport	26.8	0.3	6.4	-25.6	134.0	51.1
Narathiwat	26.8	0.2	3.9	-49.8	209.3	54.0
Over the area	26.9	0.1	12.4	-22.1 -64%	88.6	-5.6 -6%

Southern Thailand, west coast

Station	Temperature ( °c)		Rainfall (mm)		Accumulative rainfall (mm) Since 1 January	
	Mean	Above or below normal	Actual	Above or below normal	Actual	Above or below normal
Ranong	27.9	0.4	0.0	-16.0	2.5	-23.5
Takua Pa	27.6	0.6	8.4	-32.7	47.2	-33.3
Phuket	29.4	0.7	23.8	-0.1	42.0	-12.2
Phuket Airport	28.4	0.7	10.6	-16.6	22.8	-40.6
Ko Lanta	28.4	0.2	0.0	-18.0	15.1	-17.8
Trang Airport	27.7	0.2	0.0	-20.8	43.8	-9.5
Satun	28.2	0.1	0.0	-45.8	26.6	-40.4
Over the area	28.2	0.4	6.1	-21.4 -78%	28.6	-25.3 -47%

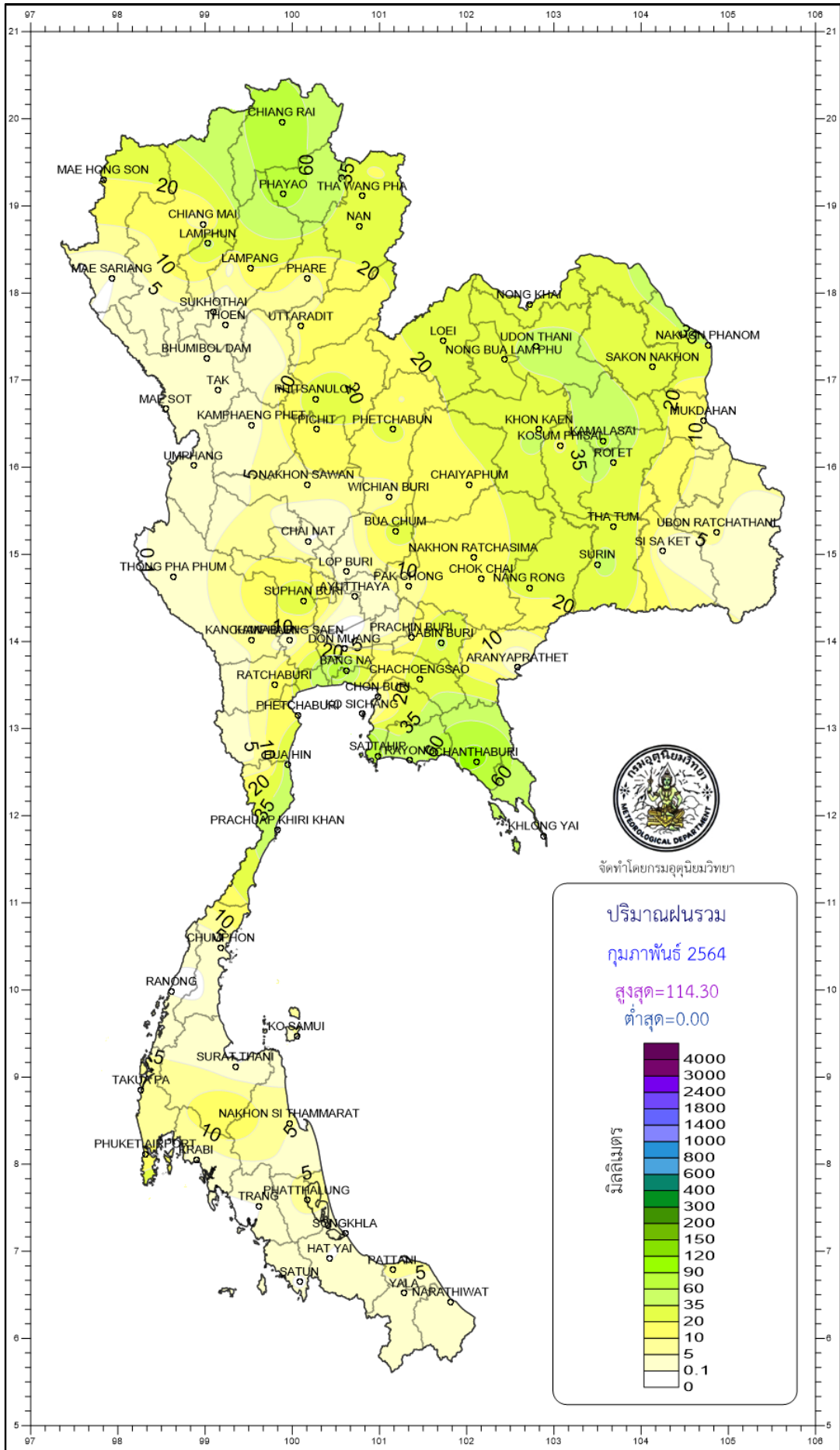
- NOTES :
- 1) Mean temperature is the average of daily dry-bulb temperature
  - 2) "T" is trace, rainfall amount less than 0.1 mm.
  - 3) "blank" is incomplete data.
  - 4) Temperature and rainfall are preliminary data.

Monthly Current Report

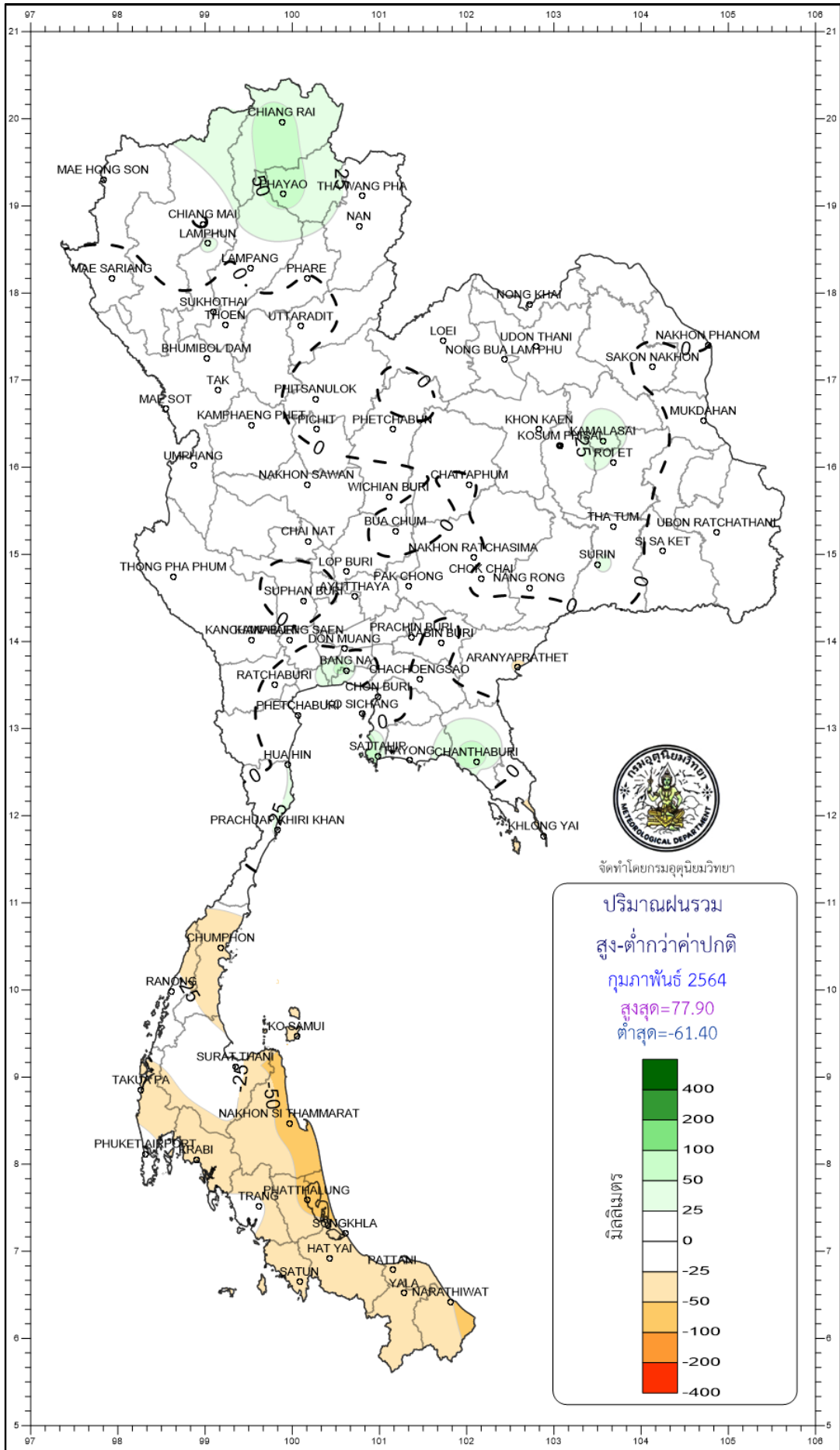
February 2021

Region	Station	Temperature (°c)		Rainfall (mm)		Accumulative rainfall (mm) Since 1 January	
		Mean	Above or below normal	Actual	Above or below normal	Actual	Above or below normal
North	Chiang Rai	22.4	0.8	68.0	54.2	87.4	66.1
	Mae Hong Son	23.2	0.6	19.7	13.7	20.4	8.0
	Phayao	23.9	1.1	73.2	64.0	75.8	60.9
	Chiang Mai	25.4	1.5	3.3	-5.6	27.7	14.6
	Tha Wang Pha	23.5	1.0	28.8	19.8	31.6	15.6
	Nan	24.3	0.7	27.8	15.9	28.0	11.7
	Lamphun	25.0	0.7	41.4	36.5	43.6	35.9
	Lampang	25.7	1.0	19.5	10.7	20.1	8.5
	Mae Sariang	24.4	2.2	0.0	-6.5	1.8	-6.2
	Phrae	24.8	0.2	6.6	-2.2	6.6	-8.0
	Uttaradit	26.1	0.0	10.7	-3.8	10.7	-9.3
	Bhumibol Dam	26.5	-0.2	5.1	-1.8	5.1	-4.4
	Tak	27.1	-0.2	0.6	-8.1	6.6	-4.2
	Mae Sot	25.8	1.3	4.4	-3.8	4.4	-5.5
	Umphang	22.9	1.3	5.2	-3.9	5.2	-10.7
	Phitsanulok	26.1	-0.9	29.0	15.5	29.0	11.6
	Lom Sak	26.2	0.3	9.1	-8.0	9.1	-12.8
	Phetchabun	26.5	0.0	23.4	7.3	23.4	1.7
	Wichian Buri	27.0	-0.5	6.1	-6.5	6.1	-14.2
	Kamphaeng Phet	27.0	0.2	2.5	-10.6	2.7	-12.7
Northeast	Nong Khai	25.3	0.4	26.8	9.5	26.8	1.2
	Loei	24.1	-0.1	27.6	11.5	27.6	5.3
	Udon Thani	24.8	-0.5	40.4	18.4	40.4	12.1
	Nakhon Phanom	24.5	0.1	30.9	-0.1	30.9	-3.1
	Sakon Nakhon	24.2	-0.2	21.6	-7.7	21.6	-12.4
	Mukdahan	24.8	-0.1	7.2	-10.2	7.2	-13.9
	Khon Kaen	25.3	-0.6	21.4	0.0	21.4	-4.0
	Kosum Phisai	25.3	-0.5	13.1	-1.9	13.1	-5.4
	Roi Et	25.5	-0.2	26.9	7.7	26.9	4.1
	Chaiyaphum	26.4	-0.3	13.1	-1.2	13.1	-5.7
	Ubon Ratchathani	25.9	-0.6	7.3	-8.1	7.3	-10.1
	Tha Tum	25.3	-0.9	30.6	14.5	30.6	9.4
	Surin	25.8	-0.8	46.7	35.2	46.7	29.6
	Nakhon Ratchasima	26.1	-0.8	13.2	-2.9	13.2	-11.1
	Chok Chai	25.9	-0.6	19.3	4.5	19.3	0.5
Nang Rong	24.9	-1.5	22.8	3.2	22.8	-1.5	
Central	Nakhon Sawan	28.0	-0.1	8.4	-3.5	8.4	-7.8
	Bua Chum	26.6	-0.8	27.2	18.1	27.2	11.4
	Lop Buri	28.2	0.1	0.2	-6.7	0.2	-12.4
	Suphan Buri	27.7	0.3	33.1	26.2	33.1	22.5
	Thong Pha Phum	26.7	-0.1	0.6	-15.8	0.6	-21.2
	Kanchanaburi	28.2	0.2	6.1	-12.1	6.1	-15.4
	Bangkok Airport	28.2	-0.1	0.0	-9.0	0.0	-20.4
	Bangkok Metropolis	28.4	0.1	80.7	60.7	80.7	47.4
East	Prachin Buri	28.1	-0.1	8.1	-7.7	8.1	-15.4
	Kabin Buri	26.5	-1.3	40.2	15.3	40.2	6.3
	Aranyaprathet	27.9	-0.3	0.0	-27.6	0.0	-33.0
	Chon Buri	28.3	0.3	3.6	-10.7	3.6	-20.6
	Ko Sichang	27.3	-0.3	9.0	-6.7	9.0	-17.6
	Pattaya	27.1	-0.2	80.0	65.7	80.0	50.1
	Sattahip	26.5	-1.0	74.2	54.8	74.2	29.2
	Rayong	27.0	-0.9	48.4	11.9	48.4	-8.8
	Chanthaburi	27.3	0.0	114.3	77.9	114.3	59.2
	Khlong Yai	27.2	0.0	29.2	-56.8	35.0	-88.2
South (East Coast)	Phetchaburi	27.0	-0.2	19.0	15.1	19.0	3.7
	Hua Hin	27.1	-0.1	42.8	27.5	42.8	15.7
	Prachuap Khiri Khan	26.6	0.0	50.4	28.6	64.6	18.4
	Chumphon	27.0	0.3	1.7	-43.0	31.3	-72.8
	Surat Thani	26.6	0.2	0.3	-12.0	20.6	-28.5
	Ko Samui	27.3	-0.1	5.0	-49.4	55.6	-85.0
	Nakhon Si Thammarat	26.6	0.1	6.8	-61.4	125.3	-88.3
	Songkhla	27.3	-0.2	0.2	-48.4	114.1	-9.3
	Hat Yai Airport	26.8	0.1	0.0	-24.4	158.0	79.8
	Pattani Airport	26.8	0.3	6.4	-25.6	134.0	51.1
Narathiwat	26.8	0.2	3.9	-49.8	209.3	54.0	
South (West Coast)	Ranong	27.9	0.4	0.0	-16.0	2.5	-23.5
	Takua Pa	27.6	0.6	8.4	-32.7	47.2	-33.3
	Phuket	29.4	0.7	23.8	-0.1	42.0	-12.2
	Phuket Airport	28.4	0.7	10.6	-16.6	22.8	-40.6
	Ko Lanta	28.4	0.2	0.0	-18.0	15.1	-17.8
	Trang Airport	27.7	0.2	0.0	-20.8	43.8	-9.5
	Satun	28.2	0.1	0.0	-45.8	26.6	-40.4
	Over the area	26.3	0.0	20.8	0.4	35.5	-1.9
					2%		-5%

- NOTES : 1) Mean temperature is the average of daily dry-bulb temperature  
2) "T" is trace, rainfall amount less than 0.1 mm.  
3) "blank" is incomplete data  
4) Temperature and rainfall are preliminary data



จัดทำโดยกรมอุตุนิยมวิทยา



จัดทำโดยกรมอุตุนิยมวิทยา

ปริมาณฝนรวม

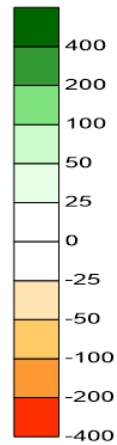
สูง-ต่ำกว่าค่าปกติ

กุมภาพันธ์ 2564

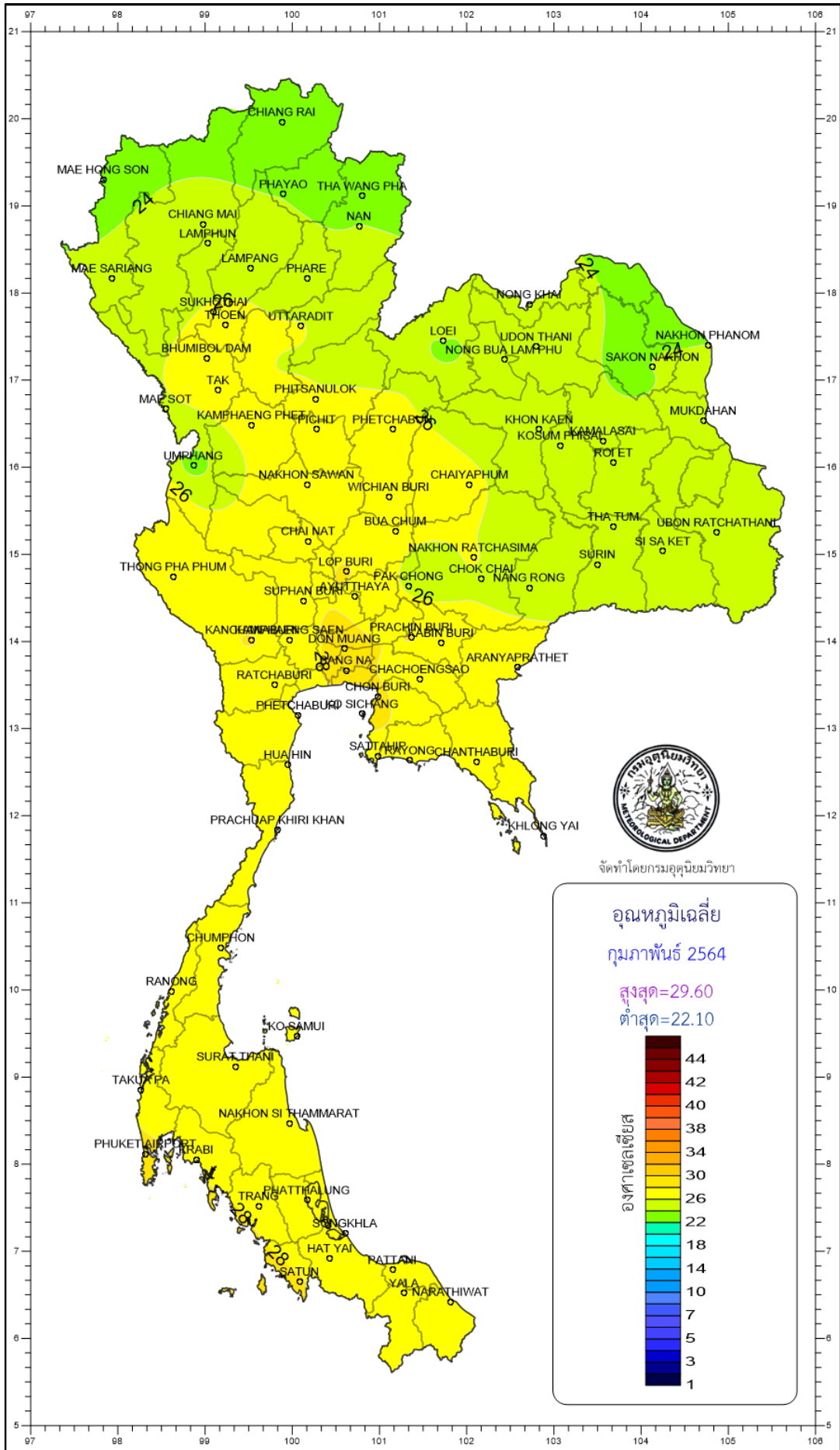
สูงสุด=77.90

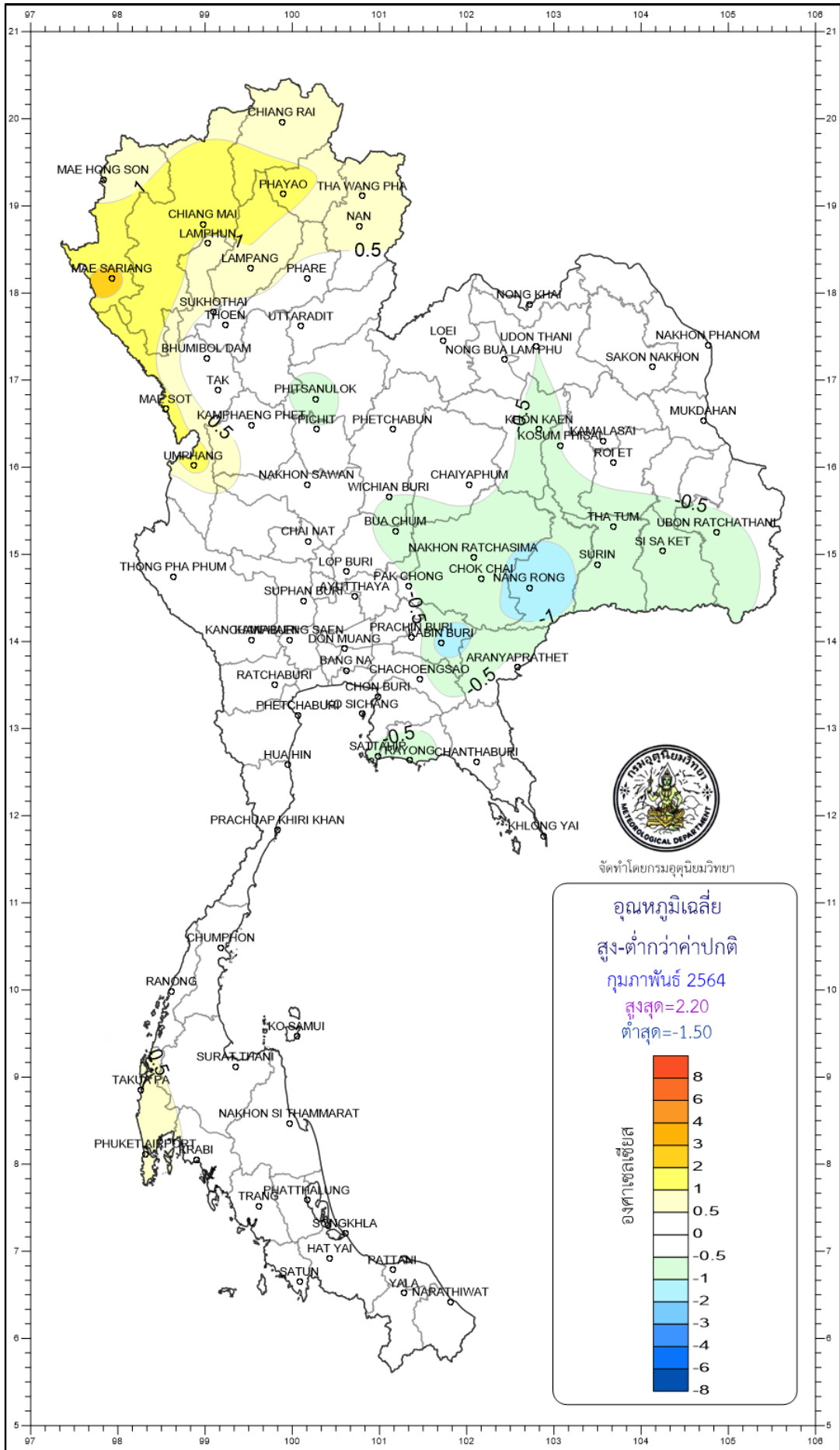
ต่ำสุด=-61.40

มิลลิเมตร

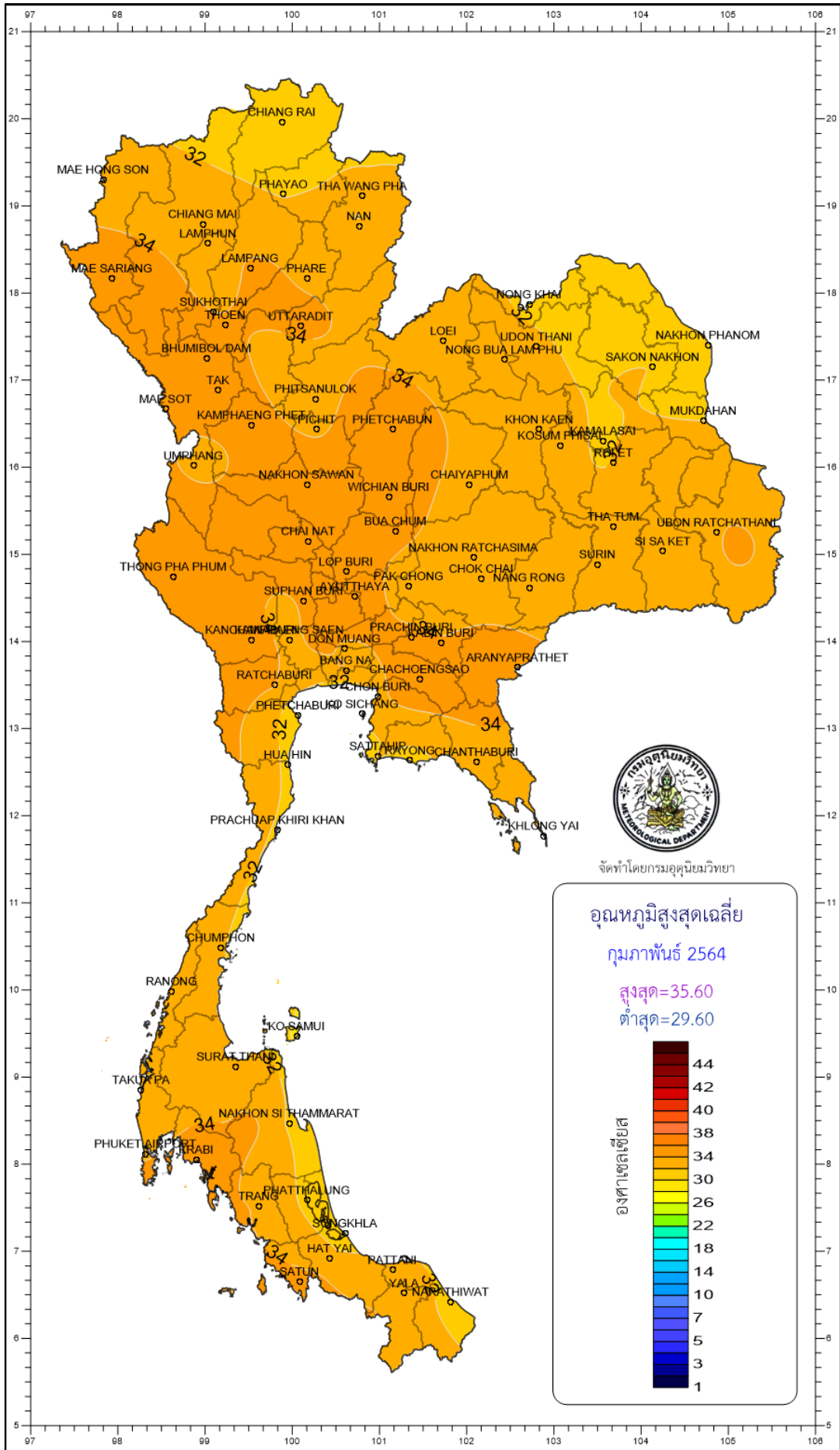




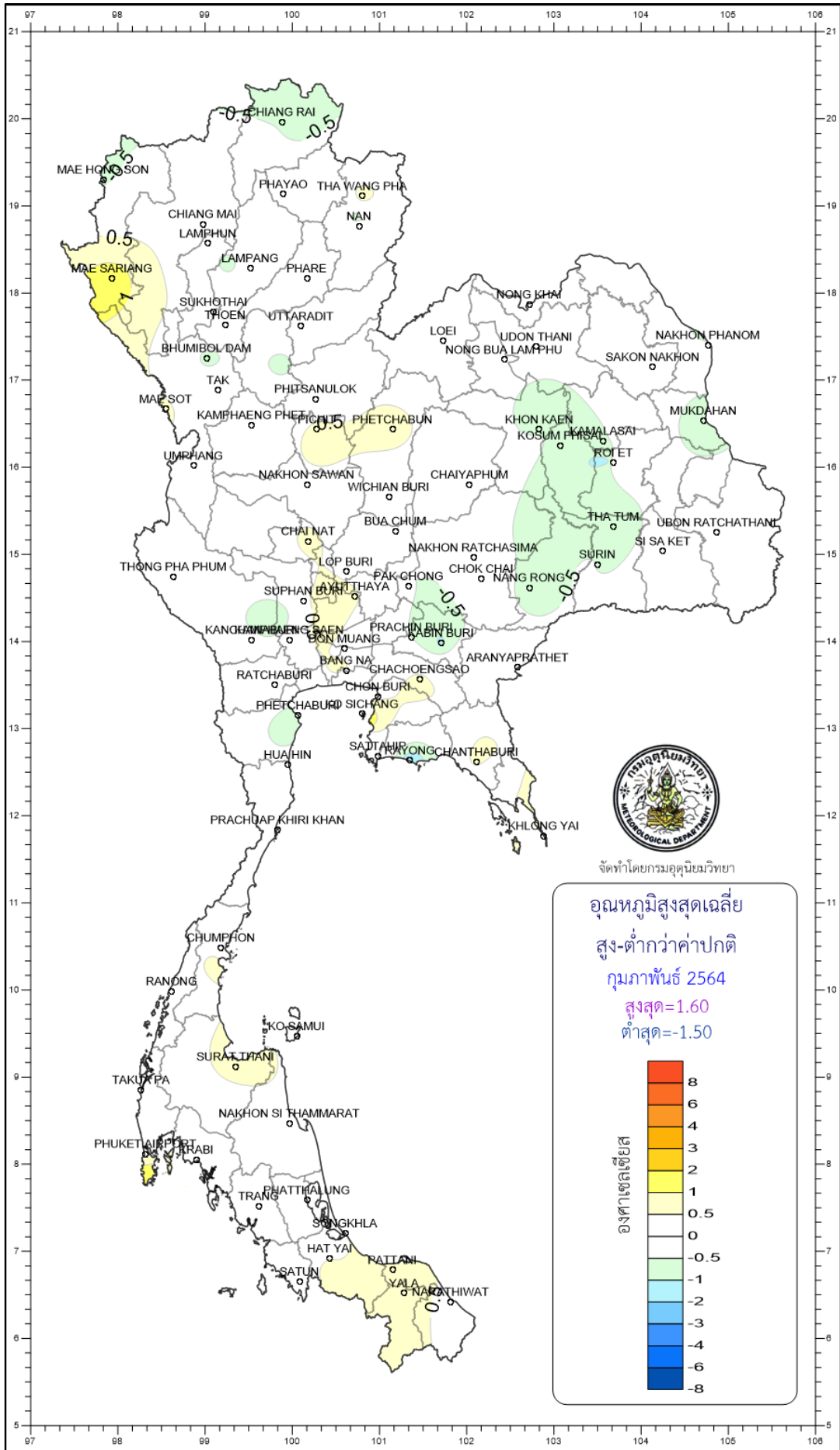




จัดทำโดยกรมอุตุนิยมวิทยา



CHIANG RAI  
 MAE HONG SON  
 PHAYAO  
 THA WANG PHA  
 NAN  
 CHIANG MAI  
 LAMPHUN  
 MAE SARIANG  
 LAMPANG  
 PHARE  
 SUKHO THAI  
 PHOEN  
 UTTARADIT  
 BHUMIBOL DAM  
 TAK  
 PHITSANULOK  
 MAE SOT  
 KAMPHAENG PHET  
 PHETCHABUN  
 NONG KHAI  
 LOEI  
 UDON THANI  
 NONG BUA LAMPHU  
 NAKHON PHANOM  
 SAKON NAKHON  
 MUKDAHAN  
 UMPHANG  
 NAKHON SAWAN  
 WICHIAN BURI  
 CHAIYAPHUM  
 KHON KAEN  
 KOSUM PHITHEE  
 KAMALASAI  
 ROEET  
 CHAI NAT  
 BUA CHUM  
 THA TUM  
 UBON RATCHATHANI  
 THONG PHA PHUM  
 LOP BURI  
 NAKHON RATCHASIMA  
 SURIN  
 SI SA KET  
 SUPHAN BURI  
 AYUTTHAYA  
 PAK CHONG  
 CHOK CHAI  
 NANG RONG  
 KANOUANG  
 BANG SAEN  
 DON MUANG  
 PRACHIN BURI  
 UBBON BURI  
 RATCHABURI  
 BANG NA  
 CHACHOENGSAO  
 ARANYAPRATHET  
 PHETCHABURI  
 SICHANG  
 CHON BURI  
 HUA HIN  
 SATTAHIP  
 KAYONG CHANTHABURI  
 PRACHUAP KHIRI KHAN  
 KHLONG YAI  
 CHUMPHON  
 RANONG  
 KO SAMUI  
 SURATTHANI  
 TAKU PA  
 NAKHON SI THAMMARAT  
 PHUKET AIRPORT  
 PHUKET FABI  
 TRANG  
 PHATTALUNG  
 SRINGKHLA  
 HAT YAI  
 RATTANI  
 SATUN  
 YALA  
 NARATHIWAT



จัดทำโดยกรมอุตุนิยมวิทยา

